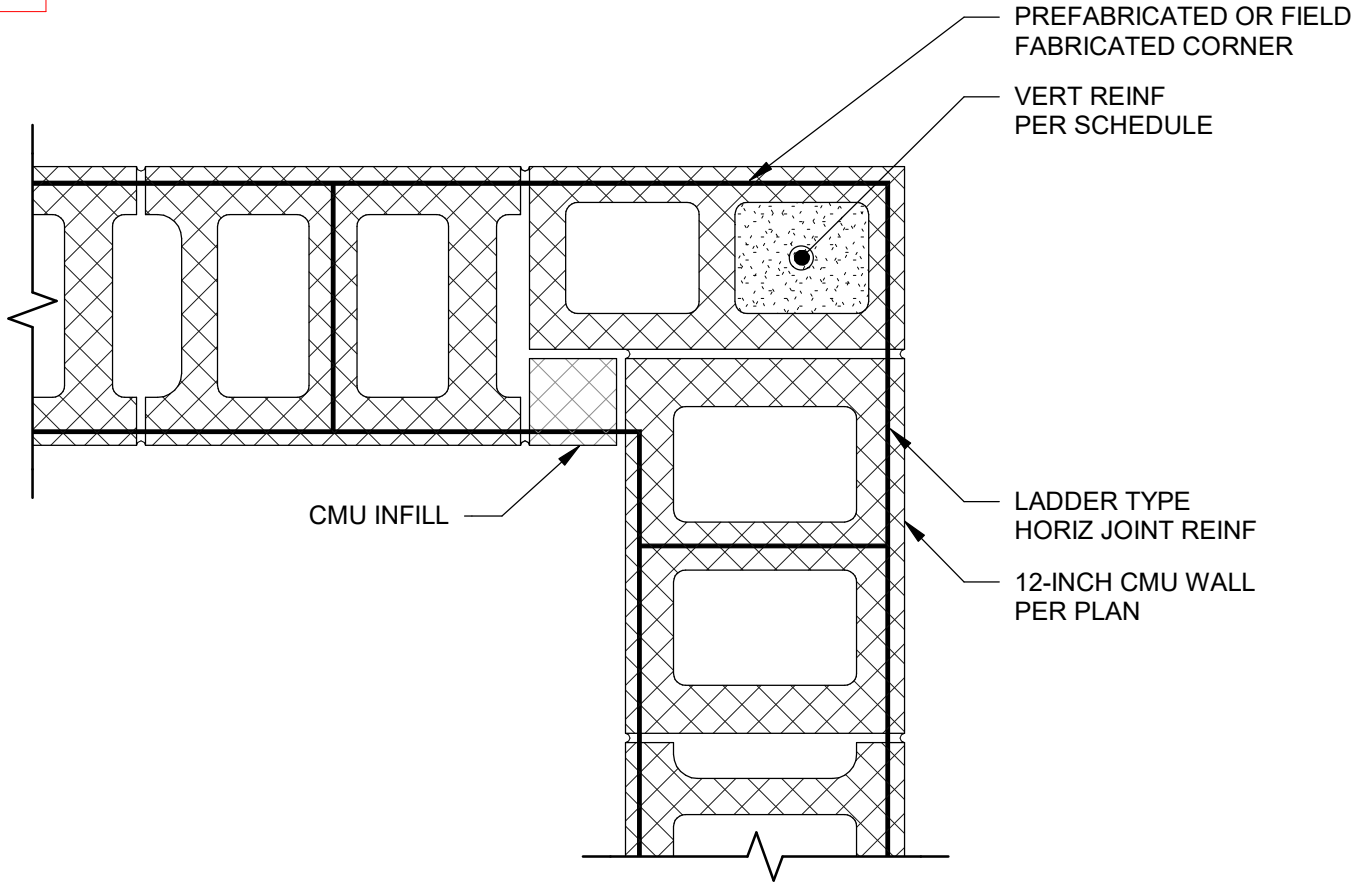
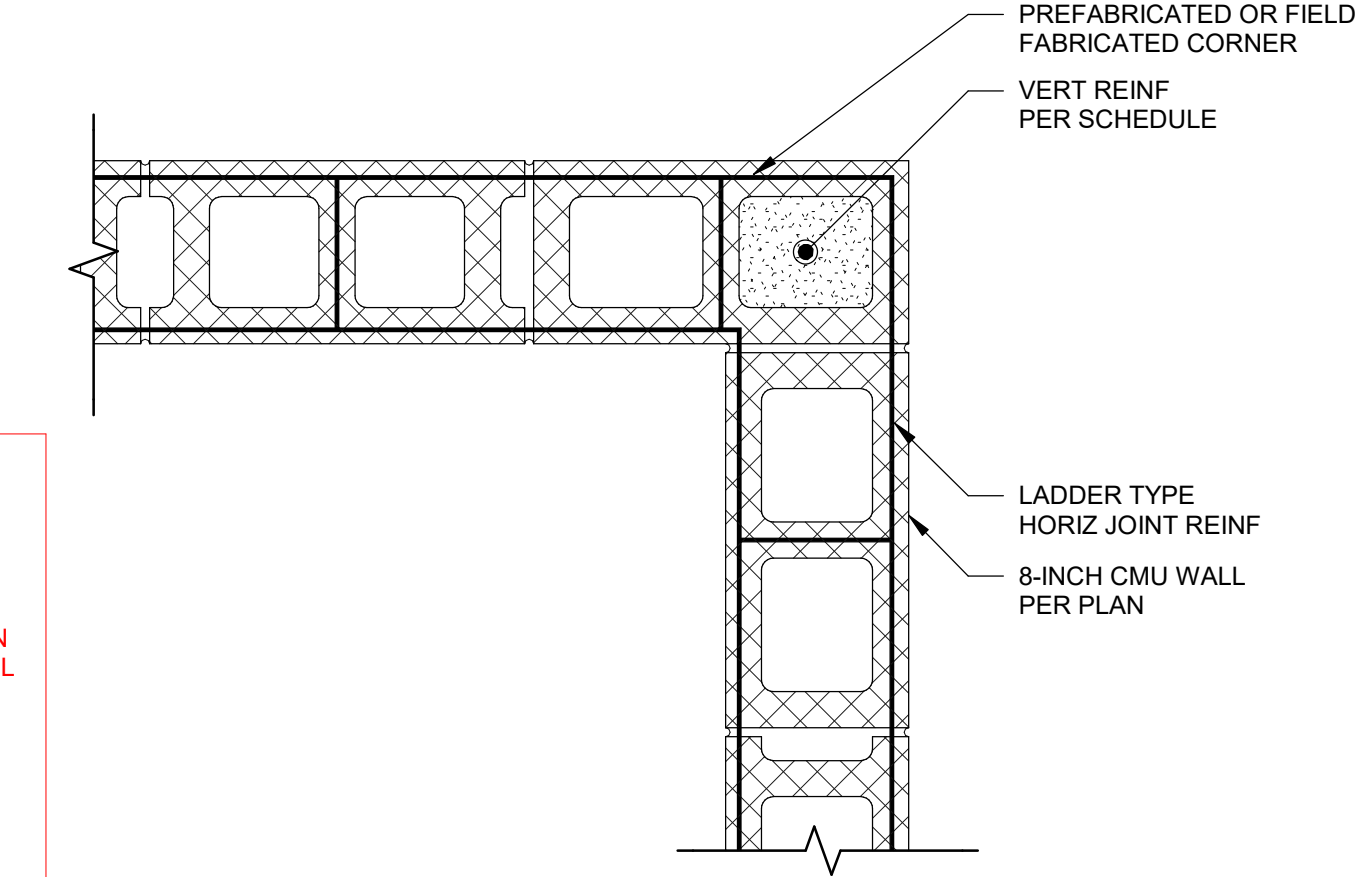


DISCLAIMER: The Block Design Collective (“BDC”) does not make any representations or warranties with respect to the accuracy or suitability of this information, and persons making use of this information do so at their own risk. BDC disclaims liability for damages of any kind, including any special, indirect, or consequential damages, which may result from use of this information. This information is not to be interpreted as indicating compliance with, or waiver of, any applicable building code, ordinance, standard or law.



DESIGNER NOTES:

CODE REQUIREMENTS

1. TMS 402 SECTION 6.1.4.2 REQUIRES JOINT REINFORCEMENT TO BE PROTECTED FROM CORROSION BY HOT-DIPPED GALVANIZED COATING OR EPOXY COATING WHEN USED IN MASONRY EXPOSED TO HEAT OR WEATHER AND INTERIOR WALLS EXPOSED TO A MEAN RELATIVE HUMIDITY EXCEEDING 75 PERCENT, OR STAINLESS STEEL JOINT REINFORCEMENT MAY BE USED. ALL OTHER JOINT REINFORCEMENT SHALL BE MILL GALVANIZED, HOT-DIP GALVANIZED, OR STAINLESS STEEL.
2. TMS 602 ARTICLE 3.4 B.10 REQUIRES A MINIMUM 6" [8"] LAP SPLICE FOR JOINT REINFORCEMENT.
3. JOINT REINFORCEMENT TO BE CONTINUOUS AROUND CORNERS USING EITHER PREFABRICATED CORNERS OR AN ESTABLISHED FIELD FABRICATED PROCEDURE.